

# ADAPTIVE IMMERSION TECHNOLOGIES

## *Unique Qualifications and Capabilities*

Assessment scoring algorithm development, scoring optimization, and passing scores,

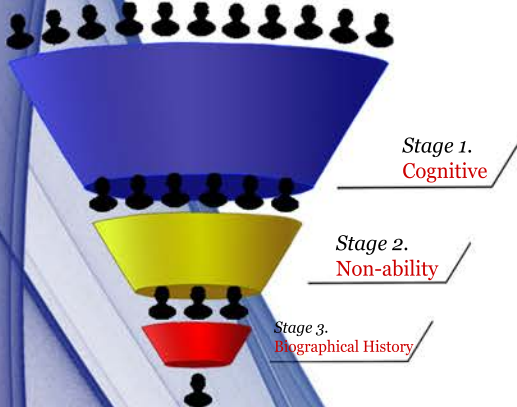
Leveraging game development and gamification principles to create immersive, simulation-based training and assessment solutions



Technology-enabled performance assessment and diagnosis,

Computer-adaptive assessment and training employing modern psychometric theory,

Algorithm development, optimization, and benchmarking for real-time, simulation-based assessment



## *Specific Capabilities & Research Interested In*

Evolution and application of machine learning algorithms for complex pattern recognition in training and performance,

Developing novel methods for measuring human performance and resilience,

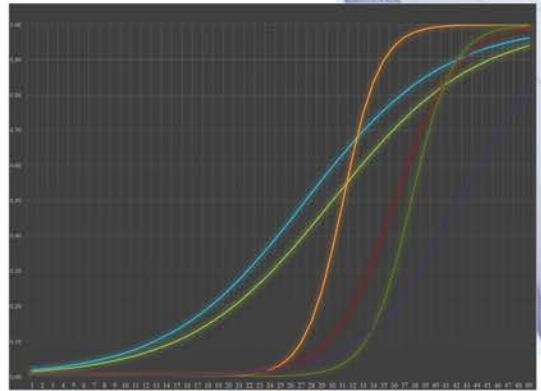
Developing database of associated knowledge, skills, abilities, and other characteristics for intelligence community domains,

Using analytic and visual cognition (data visualization) to enhance human sensor capabilities



Novel machine learning applications to complex human performance prediction problems,

Computational modeling of human performance



## *Research Areas of Interest*

Implementation and testing of mobile, worn, and/or carried sensors for construct measurement,

Development of novel methods for measuring cognitive abilities & stress resilience,

Research in machine learning applications, Big Data, and artificial intelligence,

Research in computational modeling of human performance,

Research in cyber intelligence analysis

Phillip M. Mangos, Ph.D.,

Noël A. Hulse

Adaptive Immersion Technologies

3802 Spectrum Blvd., Suite 136A,

Tampa, FL, 33612

(321) 262-6649

[phillip.mangos@adaptiveimmersion.com](mailto:phillip.mangos@adaptiveimmersion.com)

[noel.hulse@adaptiveimmersion.com](mailto:noel.hulse@adaptiveimmersion.com)

[www.adaptiveimmersion.com](http://www.adaptiveimmersion.com)