

Corporate Technology Brief

M*Modal

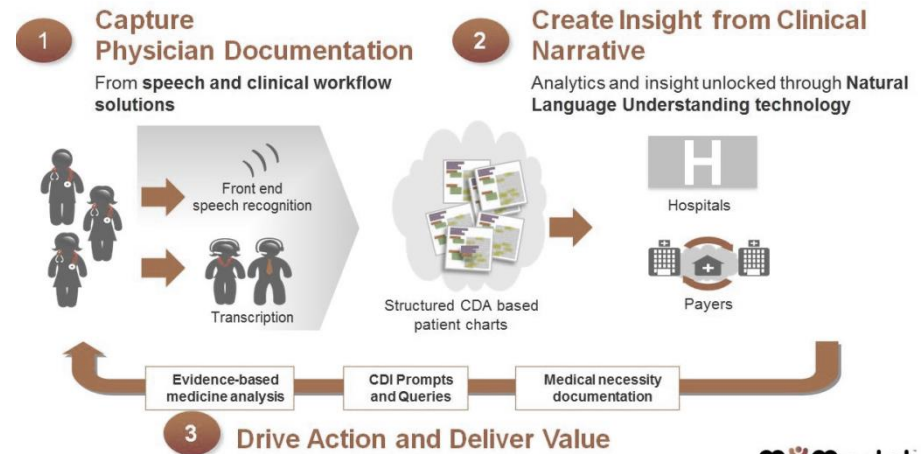
Detlef Koll

V. “Juggy” Jagannathan

Jason Kolinovsky

- M*Modal research and commercial focus is on
 - speech recognition for both conversational dialog, and computer directed speech
 - natural language understanding to build deep semantic models from a combination of structured and unstructured information
- Primarily in the domain of healthcare documentation
 - E.g.: build clinical model of a medical condition with symptoms, medications, treatments, outcomes from narrative physician notes

Transforming Words Into Insight and Action



Capabilities

- SR and NLU at scale:
 - ½ billion minutes of physician dictation recognized per year;
100 million clinical documents deeply structured into HL7 CDA XML
 - Over 200,000 physician users
 - Broad application of NLU across dozens of use cases (computer assisted coding, live clinical documentation improvement, abstraction, decision support, ...)
- M*Modal’s speech recognition solutions are used for:
 - Cloud based, desktop based, and on-device recognition on mobile devices
 - Meeting transcription, call center support systems, back end transcription of dictated notes, front end speech recognition, etc.
 - In production: US/UK/Australian English, German, Japanese, Thai

Experience with: Arabic, Korean, Mandarin Chinese
- Full NLP stack for clinical data abstraction.
Semantic modeling and reasoning layer.



- Our group is interested in partnering in this context with companies with experience in:
 - Multi-lingual information retrieval
 - Summarization
 - Translation
 - Broad domain semantic modeling
- Generally with any organization that can effectively utilize our speech and NLU technologies in a healthcare domain.

Contact Information

- Name: Detlef Koll
- Title: CTO
- Organization: M*Modal
- Email address: detlef.koll@mmodal.com
- Phone number(s): (412) 422-2002 Ext 7211
- url: www.mmodal.com