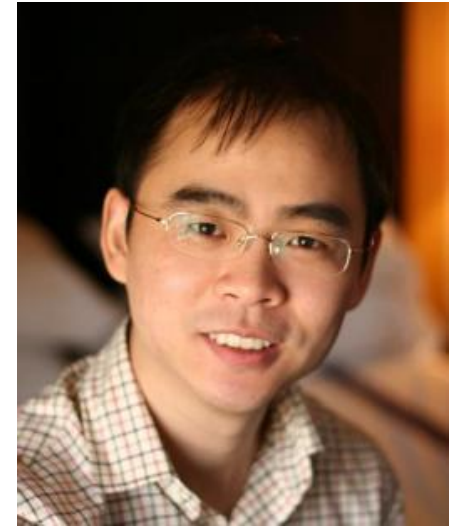




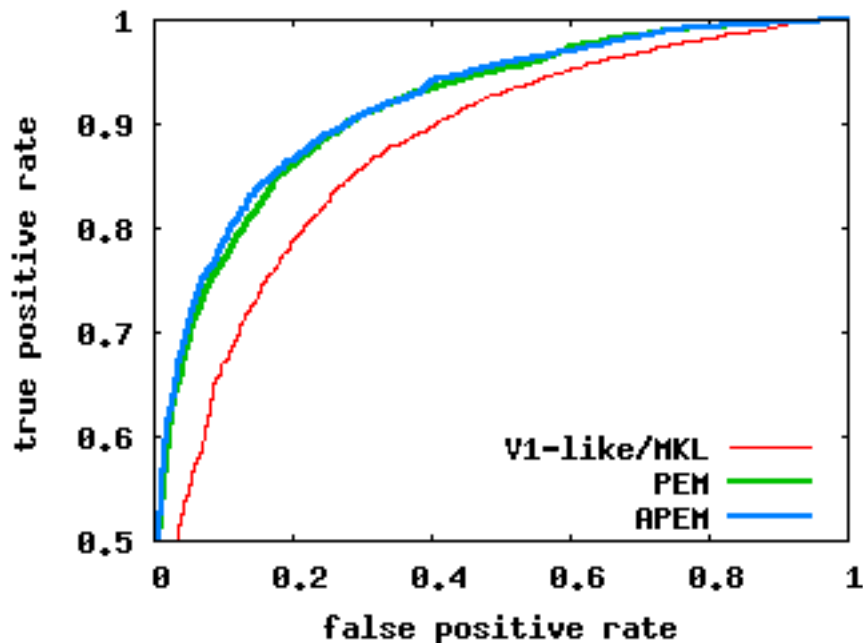
- Stevens Institute of Technology
- Lead Investigator: Prof. Gang Hua
- Current Team Member:
 - Ph.D. student: Haoxiang Li





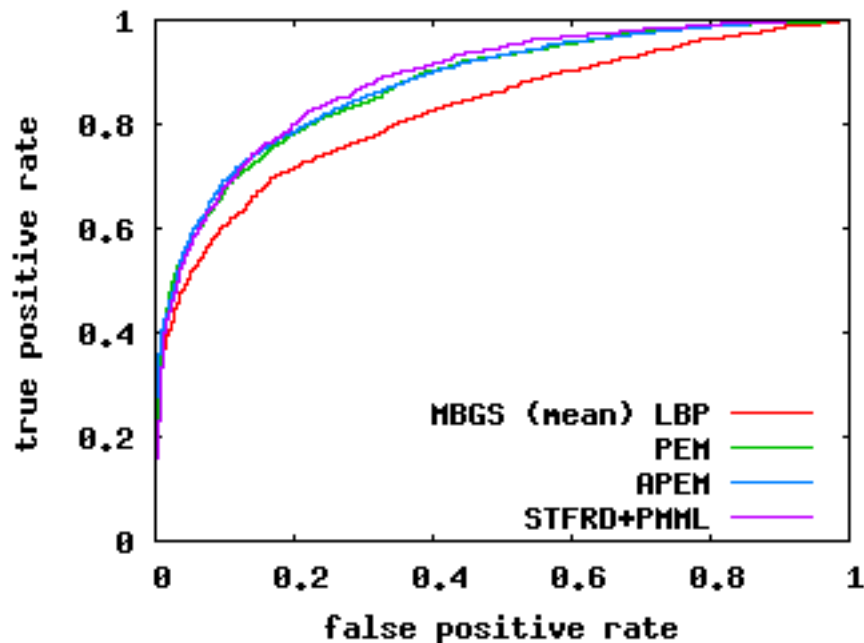
Probabilistic Elastic Matching for Pose Variant Face Verification (Our paper in [CVPR 2013](#))

- A framework for both image & video based face verification
- Not using any external training data
 - NO.1 Results on LFW
 - NO.1 result on YouTube Video Face Data set



V1-Like	APEM (CVPR)	APEM (Up-to-date)
79.35 ± 0.55%	84.08 ± 1.20 %	84.43 ± 1.13 %

Labeled Face in the Wild

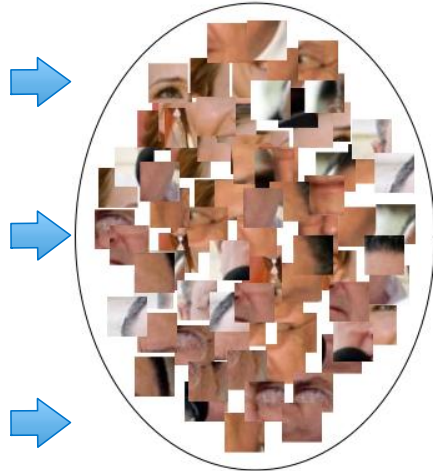


MBGS	STFRD+PMML	APEM (CVPR)	APEM (Up-to-date)
76.4 ± 1.8%	79.50 ± 2.5 %	79.10 ± 1.50%	79.70 ± 1.62 %

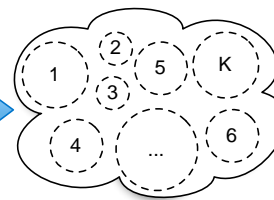
YouTube Video Face Database



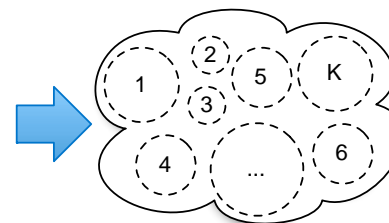
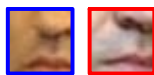
Training Corpus



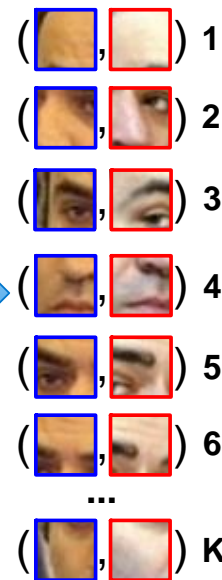
Training Features
(Showing Appearance)



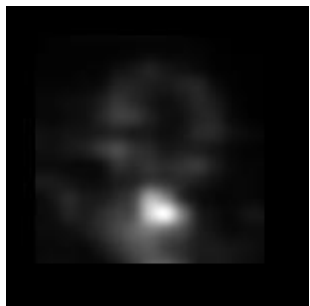
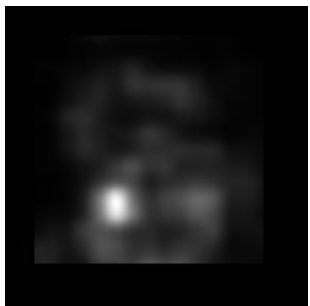
UBM-GMM with
K components



UBM-GMM with
K components



K pairs





- Future Work / Ongoing Research
 - Fusing more features describing textures, shape, appearances, and color
 - Further refine the feature matching method
 - Probabilistic Elastic Representation for more robust face detection (our ICCV'13 submission)



Contact Information

- Gang Hua
- Associate Professor
- Stevens Institute of Technology
- ghua@stevens.edu
- Phone Number:
 - 201-216-8073 (office)
 - 847-372-6619 (cell)
- <http://www.cs.stevens.edu/~ghua/>