

- Georgia Institute of Technology
- Lead Investigator
 - Irfan Essa
- Current Team Members:
 - Grant Schindler
 - Jim Rehg
 - Frank Dellaert



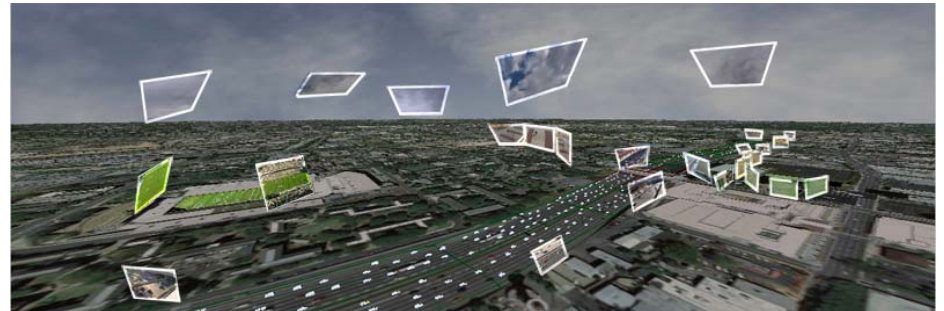


- Research Areas:
 - Computer Vision
 - Machine Learning

- Related Projects:



4D Cities Project: structure from motion across historical time scales (CVPR 07-10)

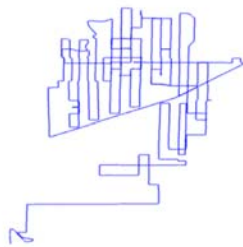


Generating Augmented Aerial Earth Maps by combining videos with Aerial Imagery for easy exploration of large amounts of videos with context (ISMAR 2009)

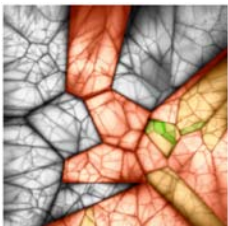


Georgia Institute of Technology

City-Scale Location Recognition (CVPR 2007)



Early work on large-scale visual location recognition (20 km, 100 million features from 30,000 images)



Vocabulary trees based on location-informative features

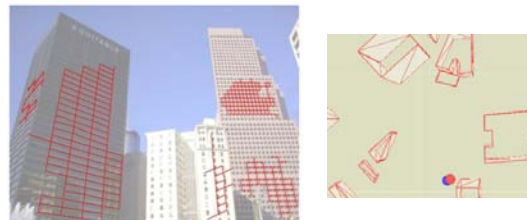
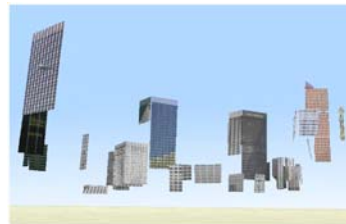


Query



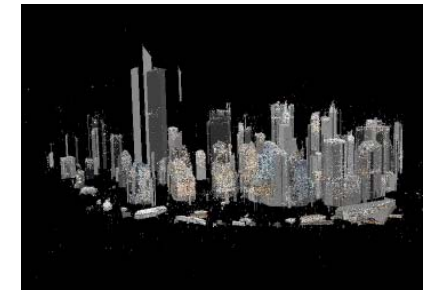
Best Match

Geo-Tagging from Repetitive Patterns (CVPR 2008)



Detected Patterns -> Precise Location

Large-Scale Spatio-Temporal Inference (CVPR 2010)



Lower Manhattan reconstruction from image database (1930-2010)



(b) Jan 1969

Automatically Inferred Date (and Location)



Georgia Institute
of **Tech**nology

- Seeking:
 - Industry partners with experience in computer vision, large-scale geolocation, system building



Contact Information

- Name: Grant Schindler
- Title: Research Scientist
- Organization: Georgia Tech
- Email address: schindler@gatech.edu
- Phone number(s): (404) 894-5206
- <http://www.cc.gatech.edu/cpl/>