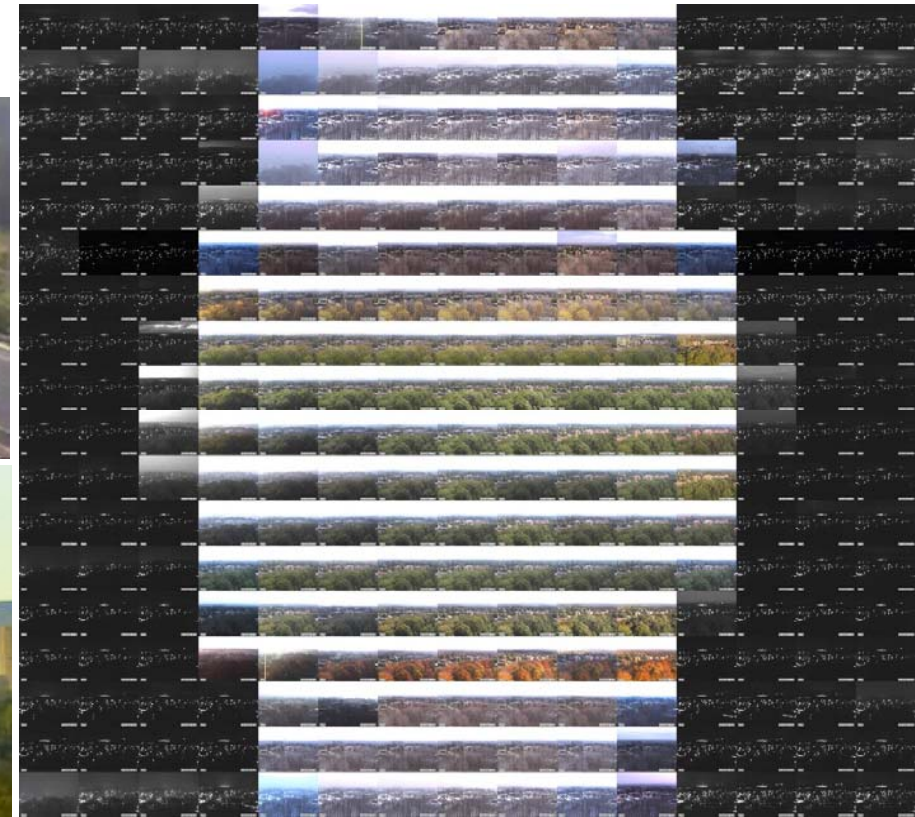


Washington University and University of Kentucky

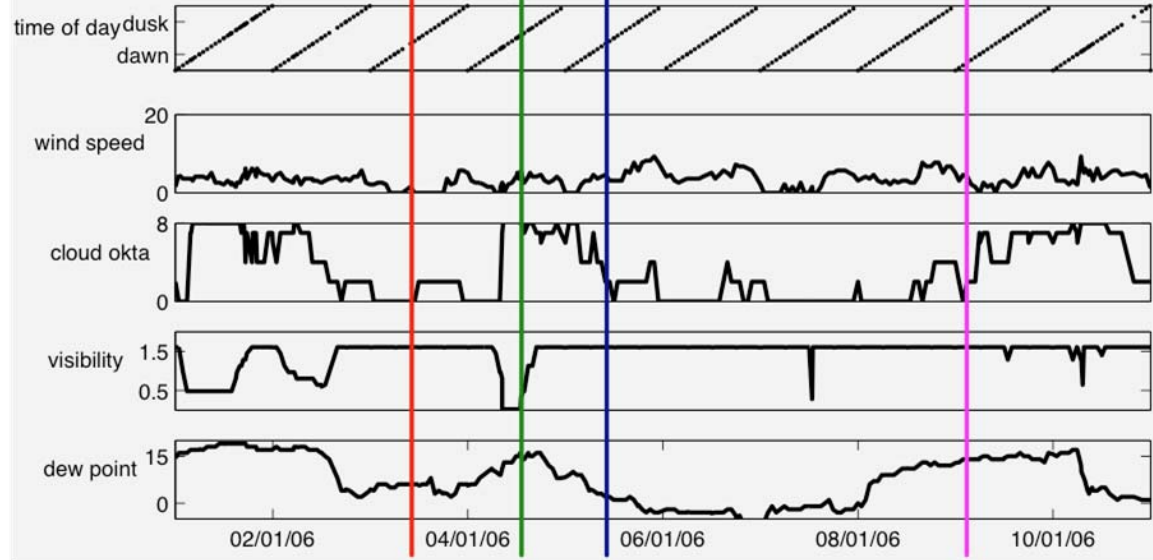
Robert Pless, Nathan Jacobs



AMOS

Archive of
Many
Outdoor Scenes

- Geo-location from natural cues occurring in many environments.
- Exploit very large, long data archives
- Attribute based localization
- Integration with satellites, other sensors and public data sources



AMOS

Archive of
Many
Outdoor Scenes

Robert Pless

- Ongoing projects w/ ONR, AFOSR, NSF (CAREER).

Nathan Jacobs

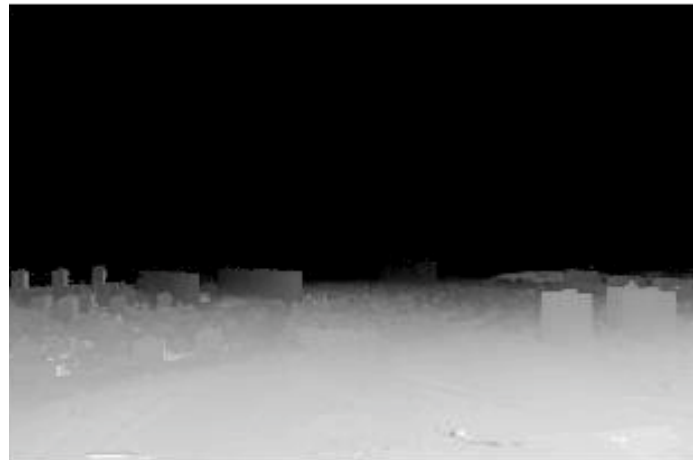
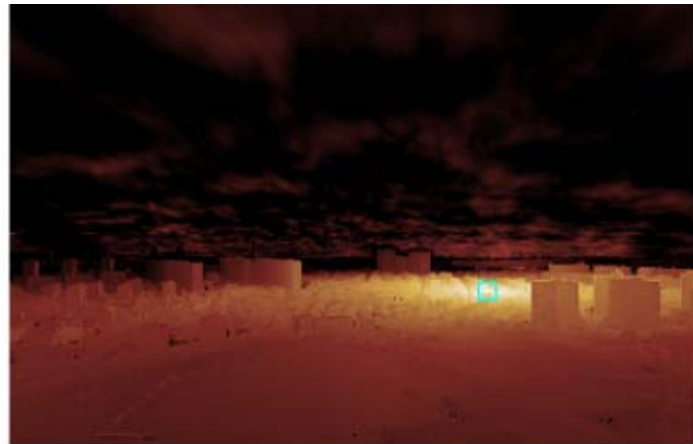
- Member of DARPA Computer Science Study Group 2011, (TS clearance)

Algorithms

- Absolute geo-localization and calibration based on time-lapse video
- High resolution, relative geo-registration and calibration based on time-lapse video
- User driven geo-localization

Dataset

- Annotated, geo-registered imagery archives with correlated weather data





Seeking partners for:

- **user-interface development:** experience with analyst workload and methods
- **system integration:** GIS database construction and data fusion
- **non-stationary cameras:** large-scale 3D correspondence based localization and motion compensation



Contact Information

Robert Pless
Associate Professor
Washington University in St. Louis
pless@wustl.edu
314-935-0536
<http://www.cs.wustl.edu/~pless>

Nathan Jacobs
Assistant Professor
University of Kentucky
jacobs@cs.uky.edu
859-257-5254
<http://cs.uky.edu/~jacobs>