



COLLEGE OF ENGINEERING

ELECTRICAL ENGINEERING & COMPUTER SCIENCE

UNIVERSITY OF MICHIGAN

# U Michigan DIVA Proposer's Day

**Jason J. Corso (lead)**

Associate Professor

<http://web.eecs.umich.edu/~jjcorso>

[jjcorso@eecs.umich.edu](mailto:jjcorso@eecs.umich.edu)

**Jia Deng**

Assistant Professor

<http://web.eecs.umich.edu/~jiadeng>

[jiadeng@umich.edu](mailto:jiadeng@umich.edu)

Electrical Engineering and Computer Science

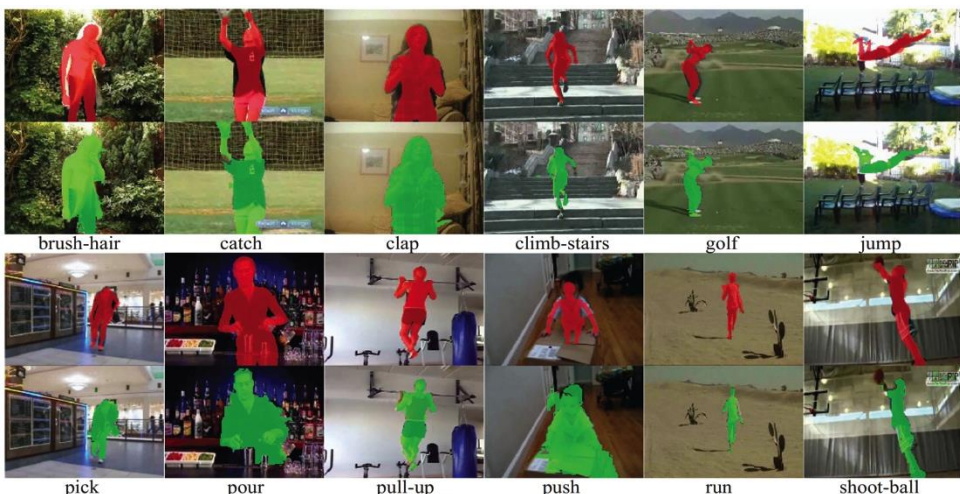
University of Michigan



# Research Areas of Interest

- Primitive actions and activities

Action Detection/Segmentation (Liu and Corso CVPR 2015)



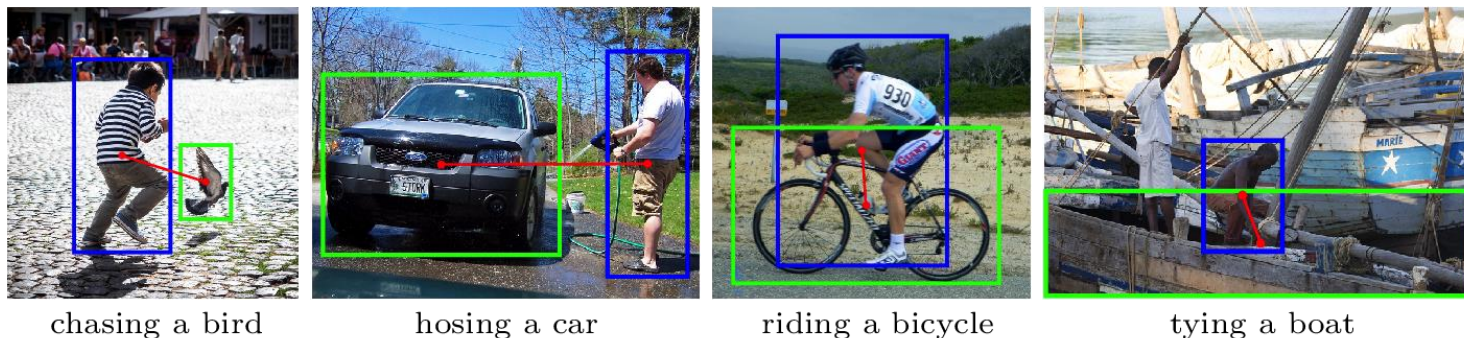
Actor-Action Semantic Segmentation

Xu and Corso CVPR 2016



- Person-object interaction

Humans Interacting with Common Objects Dataset (Chao and Deng, ICCV 2015)

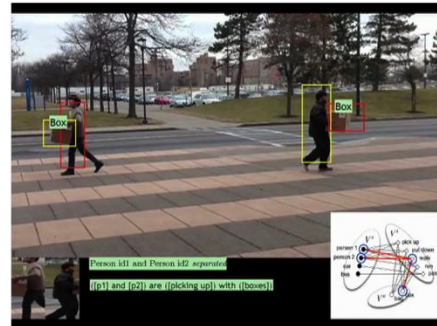
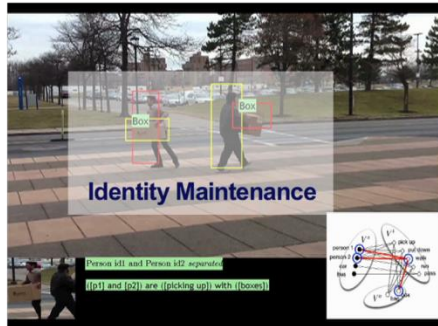
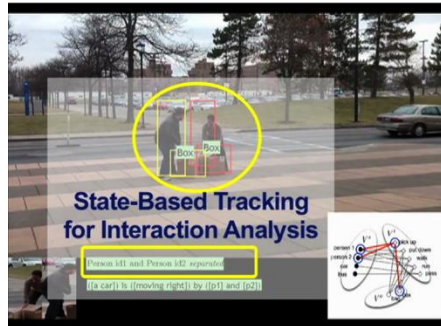
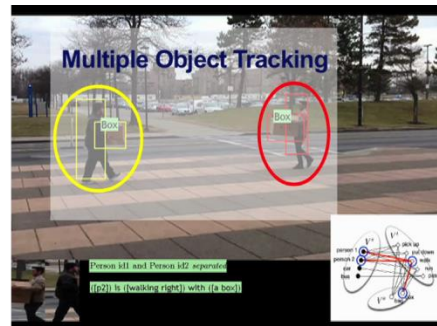
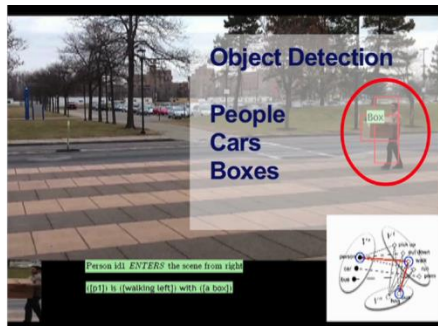


- Long-term activities, processes and events



# Unique Qualifications and Capabilities

## Video On an Index Card Engine

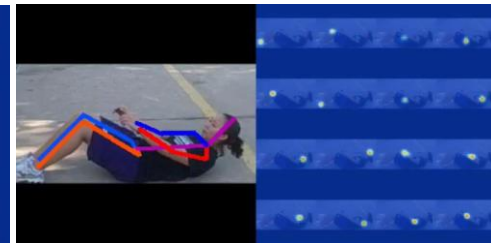
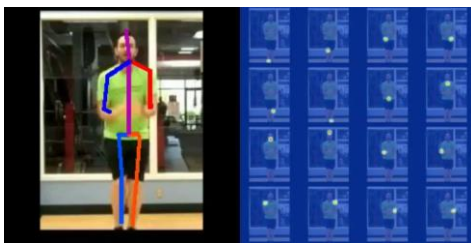
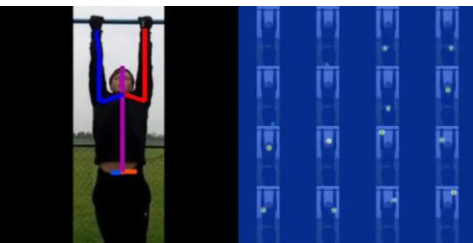


Demo Video Download

<https://youtu.be/DOmyl-UOkmc>



State of the Art Pose Estimation with Stacked Hourglass Deep Nets: <http://arxiv.org/pdf/1603.06937v1.pdf>





## Teaming Interests

- Our goal is to join a prime team that will integrate across the technical areas.
- Across the Michigan group we have substantial resources
  - 3 Postdocs, > 12 PhD Students, 1 Full Time Engineer
  - Substantial Compute within groups (e.g. >72 GPU, 70TB SAN) and at the 27,000 core University FLUX cluster.
- Substantial Experience in DOD projects
  - DARPA CSSG (PI), DARPA MINDSEYE (PI), DARPA MEDIFOR (SUB)
  - IARPA ALADDAN (SUB)



## Contact Information for Lead PI

- Jason Corso
- Associate Professor
- Electrical Engineering and  
Computer Science
- University of Michigan
  
- [jjcorso@eecs.umich.edu](mailto:jjcorso@eecs.umich.edu)
- 734-255-6622



- Short- <http://bit.ly/corsoumich>
- Full - <http://web.eecs.umich.edu/~jjcorso>