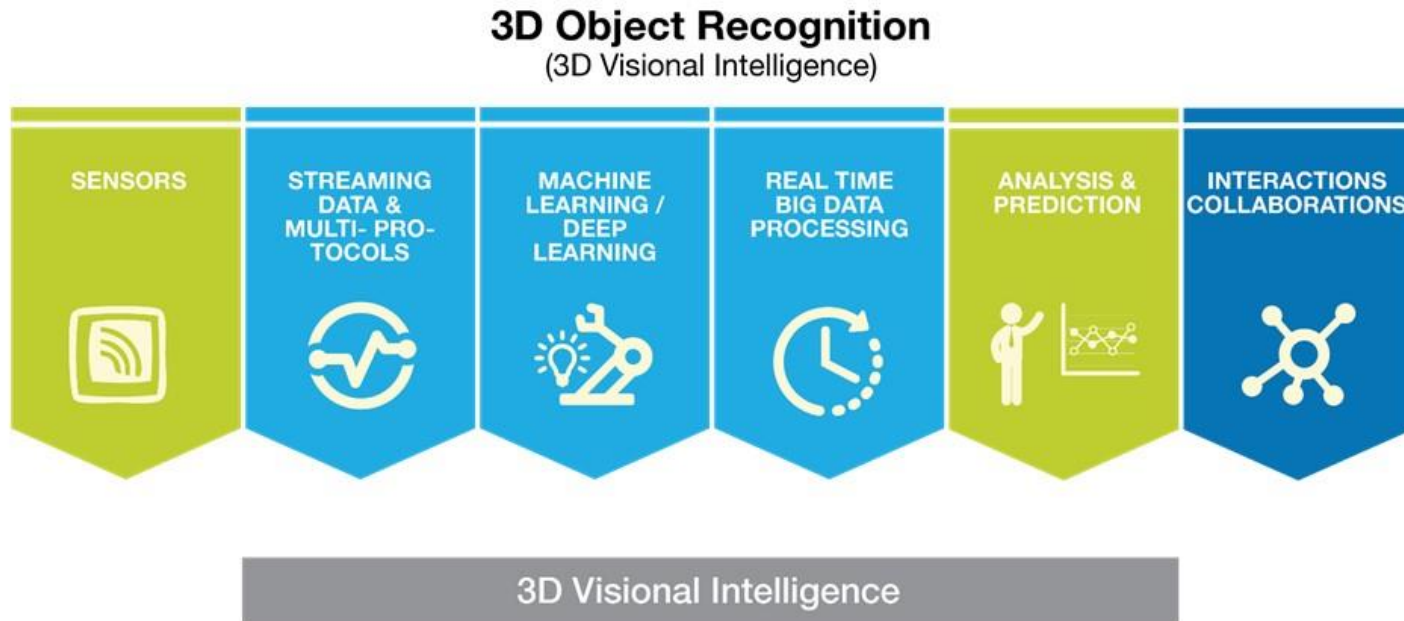


- CurvSurf USA
- Sung-Ho Moon, Ph. D.
- Current Team Members
 - CurvSurf R&D
 - Members from leading industry experts

- Developing a 3D object recognition & measurement core technology
 - functional modeling: fully automated methods for object recognition and scene understanding
 - Automatically recognize pre-defined objects and primitives



CurvSurf

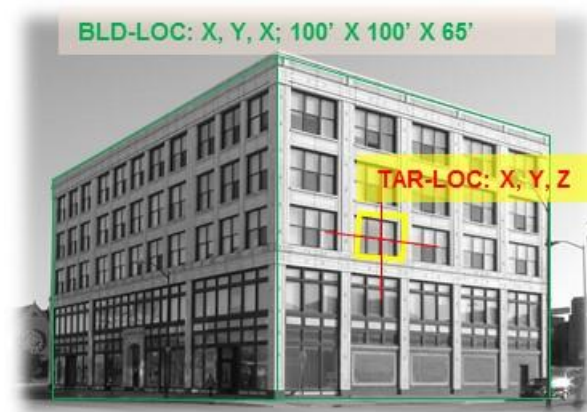
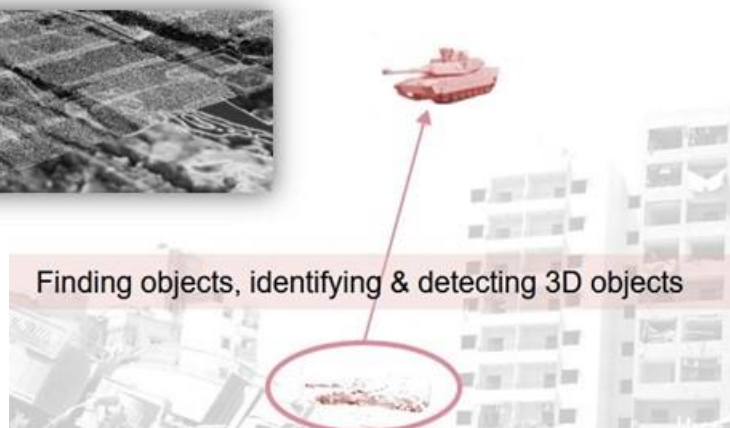
- Directly/automatically identify, recognize & measure 3D primitives in Real-Time, e.g., boxes, planes, spheres, cylinders, cones, tori, surfaces of revolution, etc.



- Different from conventional technologies, but, it can be integrated with those, e.g., Deep learning, Machine learning, and etc.
- The software solution is compact & efficient enough to be running on mobile devices and tablets, or it can be embedded to OS & Chip.



APPLICATIONS



TEAMS

- 3D related application R&D, e.g., Remote sensing Data Characterization & Classification, autonomous Vehicle, Drone, Massive Point cloud, object recognition (commercial & military), Security & logistics applications
- Government & Industry R&D, Academia



Contact Information

- Sung-Ho Moon
- CSO, VP of Business Operations & Developments
- CurvSurf USA
- sungho.moon@curvsurf.com
- +1 703-459-9660
- www.curvsurf.com