

The Computational Biomedicine and Machine Learning Lab

Dept. of Computer and Information Sciences

The University of Delaware

Lab Director: Prof. Hagit Shatkay, PhD

Current Team Members:



Gongbo Zhang



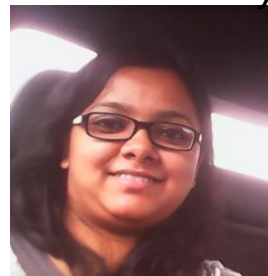
Moumita
Bhattacharya



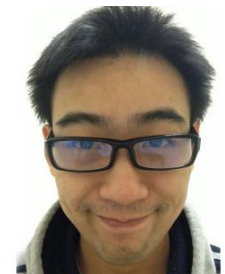
Xiaying Jiang



Pengyuan Li



Debarathi
Roychowdhury



Kaidi Ma



Research areas

- Integrating *Text* and *IMAGE* features for (biomedical) document mining

- Scientific Text Mining and Retrieval

- (Clinical) Time Series Analysis (Sonograms, ECG, Health Records, others...)

- Machine Learning from

Sparse & Imbalanced Data

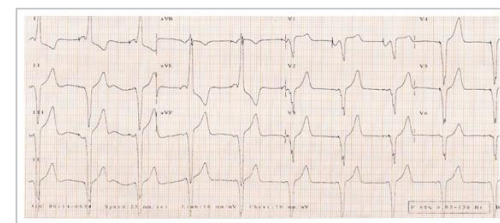
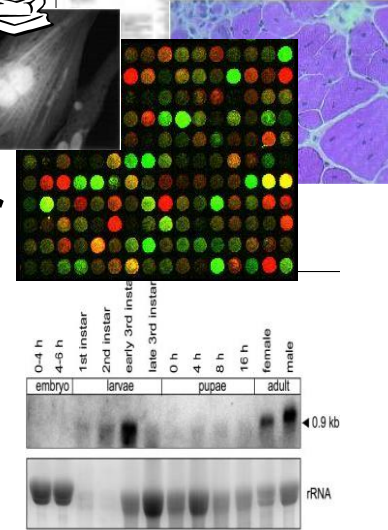


Fig. 1 - Sinus rhythm, left atrial overload; note the initial QRS complex narrowing and alterations in the ventricular repolarization.



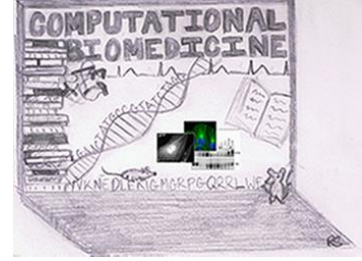
Capabilities and Qualifications



- *(Statistical) Machine Learning*
- *Stochastic Modeling (Bayesian, Markov etc.)*
- *Handling Uncertainty & Missing Data*
- *Modeling and Categorization of Imbalanced Datasets*
- *Mining Text, Language, Images & Their Combination*
- *Modeling and Mining Temporal & Time-Series Data*
- *Letting the Data Speak (& Listening to it Carefully)*
- *Extensive cross-disciplinary collaborations (Physicians, Biologists, Geneticists, Data Curators, others...)*



Looking For:



- Interesting and Challenging Applications
- *Like-minded* researcher with Complementary Skills
- Image & Visualization people



Contact



Hagit Shatkay, Associate Professor

Director, Computational Biomedicine &

Machine Learning Lab

Dept. of Computer & Information Sciences &

Center for Bioinformatics & Computational Biology

University of Delaware

shatkay@udel.edu ;

302-831-8622; 240-481-6041 ;

<https://www.eecis.udel.edu/~shatkay/>