



SRI International



SRI headquarters, Menlo Park, CA

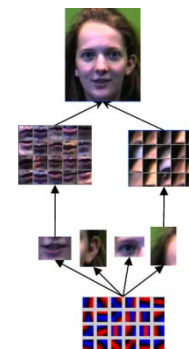
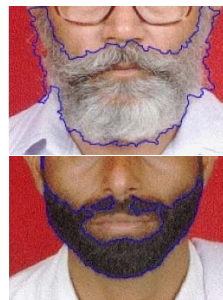
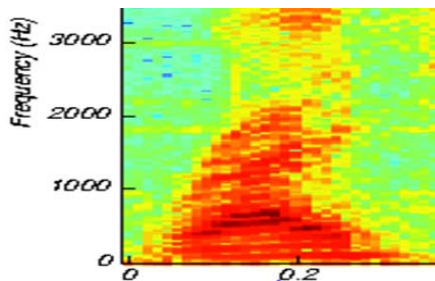


SRI Washington, D.C.

- **SRI is a world-leading independent R&D organization**
- **SRI's strength is discovery and innovation with integrated multidisciplinary teams**
- **SRI expertise contributing to this effort:**
 - **Speech Technology and Research Lab**
 - **Artificial Intelligence Center**
 - **Machine Vision Program**
 - **Applied Optics Laboratory**
 - **Cybernetic and Human Systems**
- **Lead Investigators:**
 - **Greg Myers, John Murray**

Research Areas of Interest

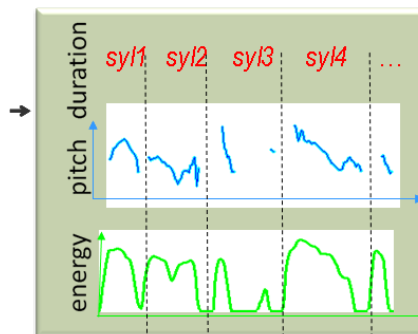
- Automated sensing and characterization of human behavior, cognitive activity, and emotion
- Remote identification of attributes of individuals
- Computer vision
- Speech and language processing
- Multimodal information extraction from audio and video
- Knowledge discovery and anomaly detection





Unique Qualifications and Capabilities

- Human action and activity recognition in video
- Lexical and prosody analysis for:
 - deception detection
 - emotion detection
 - Detection of cognitive dysfunction
- Non-invasive physiological trait sensing
- Knowledge extraction from large heterogeneous databases





Partnering and Contact Information

- **We are interested in talking with organizations that have capabilities in the area of human interaction dynamics**

Gregory K. Myers
Program Director
gregory.myers@sri.com
(650) 859-4091

John Murray
Director, Cybernetic and Human Systems
john.murray@sri.com
(650) 859-5186